


Prüfbericht - Nr.: <i>Test Report No.:</i>	31874843.001	Auftrags-Nr.: <i>Order No.:</i>	161583	Seite 1 von 7 <i>Page 1 of 7</i>
Kunden-Referenz-Nr.: <i>Client Reference No.:</i>	741623	Auftragsdatum: <i>Order date:</i>	28.08.2018	
Auftraggeber: <i>Client:</i>	Atrix International, Inc. 1350 Larc Industrial Blvd., Burnsville, MN 55337, USA			
Prüfgegenstand: <i>Test item:</i>	Vacuum Cleaner			
Bezeichnung / Typ-Nr.: <i>Identification / Type No.:</i>	VACOMEGAUM2F			
Auftrags-Inhalt: <i>Order content:</i>	Safety inspection of the Vacuum Cleaner			
Prüfgrundlage: <i>Test specification:</i>	EN 60335-2-69 : 2012 EN 60335-1 : 2012+A11+A13			
Wareneingangsdatum: <i>Date of receipt:</i>	28.08.2018			
Prüfmuster-Nr.: <i>Test sample No.:</i>	A000800696			
Prüfzeitraum: <i>Testing period:</i>	28.08.2018 - 14.11.2018			
Ort der Prüfung: <i>Place of testing:</i>	TÜV Rheinland (Guangdong) Ltd.			
Prüflaboratorium: <i>Testing laboratory:</i>	TUV Rheinland of North America, Inc. 12 Commerce Rd., Newtown, CT 06470 USA			
Prüfergebnis*: <i>Test result*:</i>	Pass			
geprüft von / tested by:		kontrolliert von / reviewed by:		
16.11.2018 Ryan Rosenberg/Test Engineer		16.11.2018 Ryan Braman/Test Engineering Manager		
Datum <i>Date</i>	Name / Stellung <i>Name / Position</i>	Unterschrift <i>Signature</i>	Datum <i>Date</i>	Name / Stellung <i>Name / Position</i>
				Unterschrift <i>Signature</i>
Sonstiges/ Other: This report is to update test report 50178487 001 with testing according to Annex AA and issue T-Mark certification. See below for details.				
Zustand des Prüfgegenstandes bei Anlieferung: <i>Condition of the test item at delivery:</i>		Prüfmuster vollständig und unbeschädigt <i>Test item complete and undamaged</i>		
<p>*Legende: 1 = sehr gut 2 = gut 3 = befriedigend 4 = ausreichend 5 = mangelhaft P(ass) = entspricht o.g. Prüfgrundlage(n) F(ail) = entspricht nicht o.g. Prüfgrundlage N/A = nicht anwendbar N/T = icht getestet</p> <p>*Legend: 1 = very good 2 = good 3 = satisfactory 4 = sufficient 5 = poor P(ass) = passed a.m. test specification(s) F(ail) = failed a.m. test specification(s) N/A = not applicable N/T = not tested</p>				
<p>Dieser Prüfbericht bezieht sich nur auf das o.g. Prüfmuster und darf ohne Genehmigung der Prüfstelle nicht auszugsweise vervielfältigt werden. Dieser Bericht berechtigt nicht zur Verwendung eines Prüfzeichens. <i>This test report relates to the a. m. test sample. Without permission of the test center this test report is not permitted to be duplicated in extracts. This test report does not entitle to carry any safety mark.</i></p>				

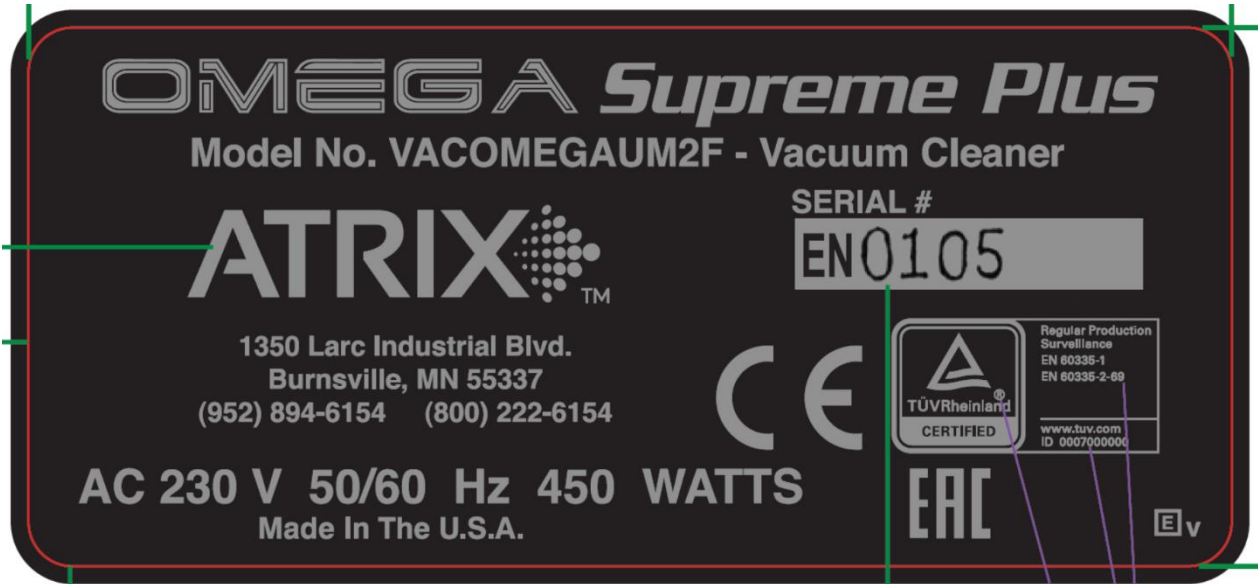
TÜV Rheinland North America, Inc. 12 Commerce Road, Newtown, CT 06470 ☐ Tel.: +1 203-426-0888 ☐ Fax: +1 203-426-4009 Mail: info@us.tuv.com ☐ Web: www.tuv.com

IEC 60335-2-69			
Clause	Requirement - Test	Result - Remark	Verdict

<p>List of Attachments (including a total number of pages in each attachment): Report 50178487 001 complete with National Differences (TÜV Rheinland (Guangdong) Ltd.) 121 pgs. Report 19343 testing according to Annex AA of EN 60335-2-69 (IBR Laboratories) 12 pgs. Report 19660 retest according to Annex AA of EN 60335-2-69 (IBR Laboratories) 3 pgs.</p>	
<p>Summary of testing:</p>	
<p>Tests performed (name of test and test clause): See report no. 50178487 001 Annex AA</p>	<p>Testing location: TÜV Rheinland (Guangdong) Ltd. No.199 Kezhu Road, Guangzhou Science City 510663, Guangzhou, CHINA TUVR NA Subcontractor SGS IBR Laboratories 11599 Morrissey Road Grass Lake, MI 49240, USA</p>
<p>Summary of compliance with National Differences List of countries addressed: EU group differences (Differences of standard EN 60335-1:2012+A11:2014+A13:2017, EN 60335-2-69: 2012, EN 62233: 2008) were considering in this report. See attachment 1 of 50178487 001.</p>	

IEC 60335-2-69			
Clause	Requirement - Test	Result - Remark	Verdict

Copy of marking plate



IEC 60335-2-69			
Clause	Requirement - Test	Result - Remark	Verdict
AA	ANNEX AA (NORMATIVE) PARTICULAR REQUIREMENTS FOR VACUUM CLEANERS AND DUST EXTRACTORS FOR THE COLLECTION OF HAZARDOUS DUSTS (IEC60335-2-69:2012)		--
6	CLASSIFICATION		--
6.AA.201	Classified according to dust classes		P
	- L (light hazard)		N/A
	- M (medium hazard)		N/A
	- H (high hazard)	Class H	P
7	MARKING AND INSTRUCTIONS		--
7.1	Model or type reference marked on the machine includes the dust class letter	Dust class letter H marked on machine	P
	Part number marked on spare parts relating to safety	Part number marked on essential filter	P
7.12	The instructions contains information about		--
	- the most important operational data	Provided in manual	P
	- the dust class	Provided in manual	P
	- the intended use of the machine	Provided in manual	P
	- any limitations of use if applicable	Provided in manual	P
	- the exact designation of spare parts relating to safety and where they may be obtained	Provided in manual	P
	- max. flow rate (m ³ /h)	Provided in manual	P
	- max. under pressure (hPa)	Provided in manual	P
	The instruction advise the user to refer to the applicable safety regulations appropriate to the materials being handled	Provided in manual	P
	Include the substance of the information		--
	- concerning use of the machine	Provided in manual	P
	- user servicing	No authorized user servicing	N/A
	- technical inspection	Provided in manual	P
	- meaning of warning label according to fig. AA.2 (for class M and class L machines)	Not this type	N/A
	- for class H and class M machines, outside of the machine should be decontaminated by vacuum cleaning methods and wiped clean or treated with sealant before being taken out of a hazardous area	Provided in manual	P

IEC 60335-2-69			
Clause	Requirement - Test	Result - Remark	Verdict
	- meaning of warning label according to fig. AA.1, including the corresponding warning text according to 7.14 (only for class H machines)	Provided in manual	P
	- for dust extractors, adequate air change rate (if the exhaust air is returned to the room)	Not this type	N/A
7.14	Class H machines fitted with label according to fig. AA.1	Label affixed	P
	Class L and M machines fitted with label according to fig. AA.2	Not this type	N/A
	Warning stated in this clause given on the label for class H machines	Warning stated on label	P
	Covers and guards removable without tool fitted with label worded "REMOVE FOR CLEANING" (for class L, class M and class H machines)	Label affixed	P
7.15	Min. height of lettering in warning notice: 3 mm	Lettering is >3mm	P
	Positioning of warning notices	Easily seen by operator	P
22	CONSTRUCTION		--
22.AA.201	Dust collection machines		--
	- built in accordance with the dust classes (see cl. 6.AA.201)	Dust class H	P
	- meet the values given in table AA.1	Meets table AA.1	P
	Machines designed for picking up wood dust and mineral dust (containing quartz) are at least of dust class M	Class H	P
22.AA.201.1	Essential filter material test as specified	Not this type	N/A
22.AA.201.2	Essential filter element test as specified	Tested and passed	P
22.AA.201.3	Assembled appliance test as specified	Tested and passed	P
22.AA.201.4	Burst strength test as specified	Tested and passed	P
22.AA.202	Filtration efficiency of dust class M and dust class H machines is tested as described	Not this type	N/A
22.AA.203	If machines are provided with a built-in cleaning mechanism, restore the required suction performance. Test as specified	Not this type	N/A

IEC 60335-2-69			
Clause	Requirement - Test	Result - Remark	Verdict
22.AA.204	Dust class M and dust class H machines are designed and constructed so that the essential filter will not be damaged when collecting sharp objects such as broken glass or nails which may be sucked up. Test as specified	Test and passed	P
22.AA.205	Capable of achieving an adequate removal of dust		--
	An indication is given as following:		--
	a) for vacuum cleaners of dust class M and H: indicator operates before the air velocity falls below 20 m/s	LED indicator provided and operates accordingly	P
	b) for suction-sweeping appliances: indicator operates before the reduction of pressure in the suction region of the brush area becomes less than 50N/m ²	Not this type	N/A
	c) for dust extractors: indicator operates before the suction velocity becomes less than stated by the manufacturer or 20 m/s or the dust source is shut off by a mechanism. If shut off is not possible a warning signal is given:	Not this type	N/A
	- an acoustic warning signal, if used, shall comply with ISO 7731		N/A
	- a visual warning signal, if used, shall comply with ISO 11428		N/A
	- a pair of voltage-free contacts and installation instructions for their use as a warning signal switching device		N/A
	Operate the appliance in accordance with the instructions for use, at nominal voltage, at rated voltage +6%, and at rated voltage -10%; and, if necessary, compare the values with the specified values. No leaking of dust shall occur	Tested and passed	P
22.AA.206	Dust class M machines (except suction sweeping machines) and dust class H machines are fitted with a disposable collection means	Essential filter is disposable	P
	For dust class M and dust class H machines, it is possible to remove the collection means with a minimum of dust release	Filter is plugged prior to removal	P
22.AA.207	In dust class H machines, the essential filter are only removable by the use of a tool. This requirement does also apply to filter elements which are relevant for the first numeral of the IP protection designation	Tool is required to remove filter	P

IEC 60335-2-69			
Clause	Requirement - Test	Result - Remark	Verdict
22.AA.208	The air speed of the exhaust of dust class M and dust class H machines shall not unduly disturb dust lying on the floor. Test as specified	Tested and passed	P
22.AA.209	In dust class H machines, the essential filter is at less than atmospheric pressure	Filter is upstream	P
	For dust class L machines, if the essential filter is on the positive side, then the penetration test of 22.AA.201.3 shall be conducted	Not this type	N/A
22.AA.210	Dust class M and dust class H machines are constructed so as to guard against accidental entry and the release of hazardous dust from any part of the machine when not in use.	Unit is plugged when not in use	P
	For easy cleaning, dust class H machines and dust class M machines shall comply with the following:		--
	– covers which are not protecting against both mechanical and electrical hazards and behind which dust can deposit are removable without tools	Cover can be easily removed	P
	– guards which are protecting against mechanical and electrical hazards have electrical interlocks which disconnect the mains supply on removal, or are removable only by using tools.	Tool is required	P
	– guards fitted with electrical interlocks are removable without tools. The interlock shall be double pole if protecting against electrical hazard, and double or single pole if protecting against mechanical hazard only.	No such interlock	N/A

End of Report